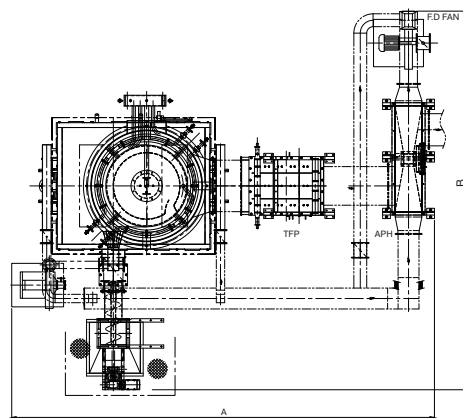


Technical Specifications

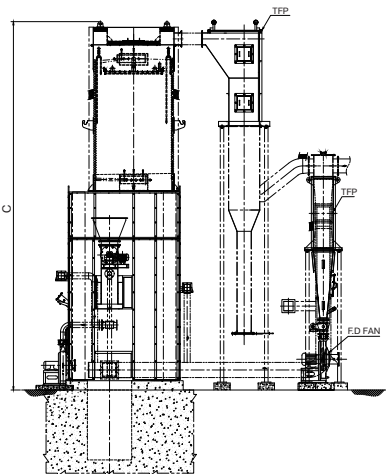
Description	Units	VT UFS 10	VT UFS 15	VT UFS 20	VT UFS 25	VT UFS 30	VT UFS 40	
Heater Performance								
Heater Capacity	kcal/hr	1000000	1500000	2000000	2500000	3000000	4000000	
Max. T.F. Outlet Temperature (Std.)	°C	280						
T. F. Flow rate	m³/hr	60	90	120	150	180	240	
Available circuit pressure at Heater outlet	mlc	25						
T.F. temperature rise	°C	34						
Efficiency at full load (+/- 2%) as per BS 845 - Part 1 (on NCV Basis)								
Indian coal		80% on SG						
Indonesian coal		81% on BB & BF						
Petcoke		76% on BB & BF						
Woodchips/Biomass Pellets	%	80% on BB & BF						
Plywaste		79% on BB & BF						
Woodlogs/Biomass briquettes		79% on SG						
Rice husk		82% on BF						
Total Connected Load (Bagfilter/Cyclomax with 1W TF Pump)								
For Stationary grate Unit	kW	30.4	39.7	50.2	60.2	75.2	90.0	
For the Bubbling bed unit	kW	37.0	46.5	58.8	72.5	87.5	102.0	
For the Bubbling cum fluidised bed unit	kW	40.4	51.4	65.9	77.4	92.4	107.0	
Length with TFPH	A	mm	7800	8500	9000	9700	10000	11000
Width B	B	mm	6300	6300	6300	6500	6500	7000
Height* C	C	mm	8000	8300	9000	9500	9600	11000
Length w/o TFPH		mm	6000	6500	7400	8150	8700	9500
Chimney Top Dia (Recommended)								
For Stationary Grate	mm	500	650	700	800	870	950	
For Bubbling Bed and BB cum fluidised bed	mm	500	600	650	750	850	950	

GA Drawing

PLAN



ELEVATION



Conserving Resources,
Preserving the Future.



Process Heat Solutions



Dynatherm

A high-performance, robust, and modular,
solid fuel-red thermic fluid heater



Air Pollution Control



Boiler and Heater



Build-Own -Operate



Chemical



Cooling



Projects and Energy Solutions



Process Heating



Renewable Energy



Water and Waste Solutions

Registered Office

D-13, MIDC Industrial Area, R D Aga Road,
Chinchwad, Pune 411019, India
Email: enquiry@thermaxglobal.com
Customer Care: 1800-209-0115

www.thermaxglobal.com

thermaxlimited

thermaxglobal

thermax_global

thermaxglobal

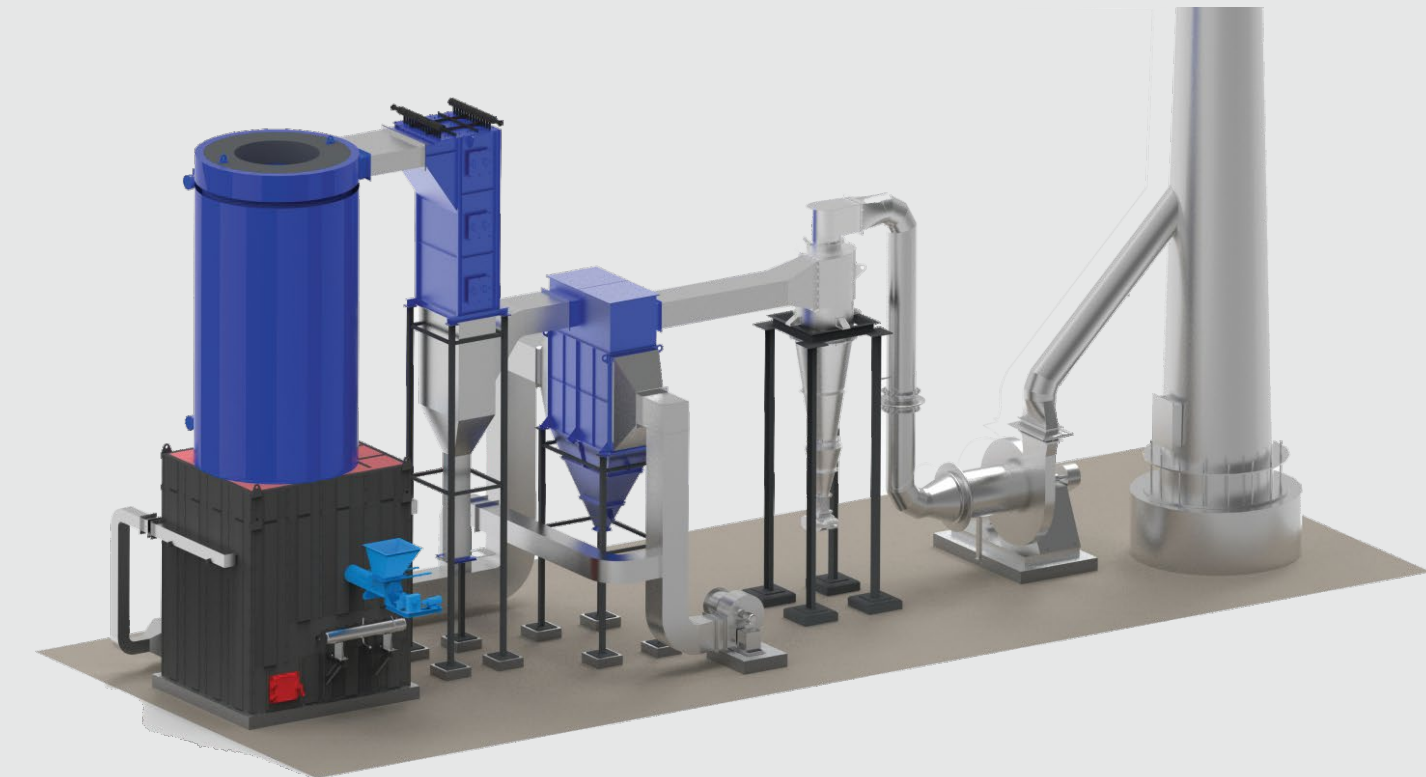
thermaxmedia



This brochure presents only some of our products and we reserve the right to amend any product details without notice.
The photographs used in the brochure are indicative and may not match the actual plant

© 2022 Thermax limited. All rights reserved.

BlackCoffeeCreatives/TL/2601



Capacities: 10 Lac kcal/hr to 40 Lac kcal/hr
Temperature: 280°C, customisable up to 300°C

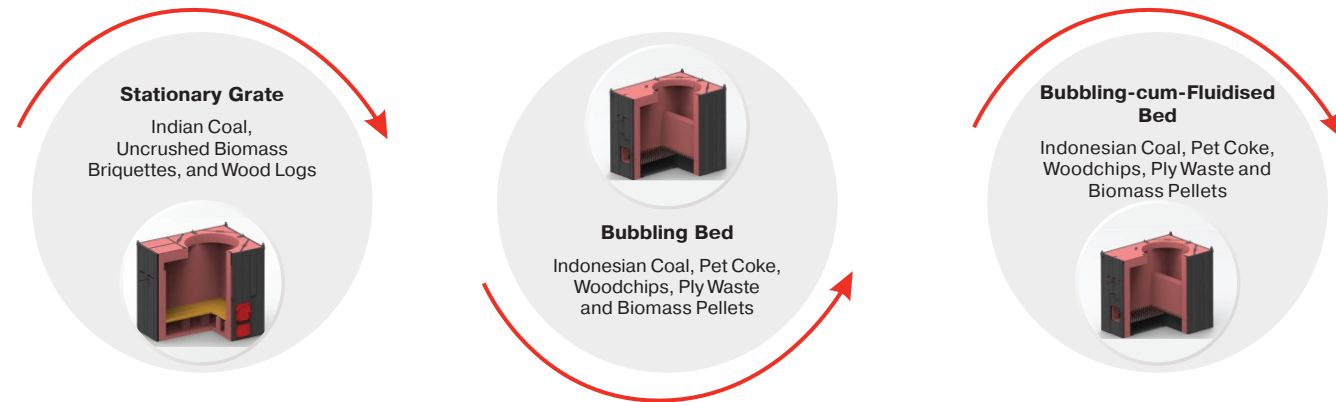
Conserving Resources, Preserving the Future.

Thermax is a leading conglomerate in the energy and environment space and a trusted partner in energy transition. Thermax's extensive portfolio includes clean air, clean energy, clean water and chemical solutions. Backed by its longstanding industry partnerships across multiple sectors, Thermax has cultivated strong expertise in audit, consulting, execution, and maintenance coupled with digital solutions, ensuring a unified energy-management experience. Leveraging its distinctive engineering capabilities, Thermax converts costs to profits while protecting the environment – a win-win for the industry and society at large.

Dynatherm

Dynatherm is a high-performance, robust, modular solid fuel-fired thermic fluid heat flexibility. The heater offers multi-fuel flexibility to address the challenge of inconsistency in operation due to varying fuel availability and quality, and enhanced heat recovery solutions to match customers' process heating demands.

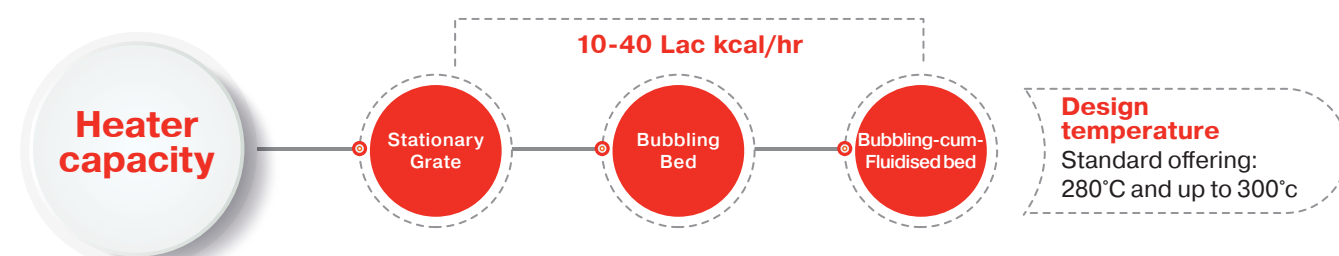
Dynatherm Offers Three Combustor Options



Fuel Firing Options



Capacity at a Glance



Notes:

- Complete heater house accessories, along with the balance of plant available on a turnkey basis.
- Customised heaters offering temperatures higher than 300°C can be provided.
- Pressurised hot water closed loop system available up to 160°C.

Coil Design

- ▶ Parallel flow design
- ▶ Reduces choking in the annular space with the help of a soot blower
- ▶ Reduces erosion of the top and bottom of the coil that occurs due to flue gas
- ▶ Reduces footprint by 30% compared to a conventional two-coil heater
- ▶ Ensures a better life for the heater and the thermic fluid

Cooled Turning Box

- ▶ Reduces slagging and fouling
- ▶ Eliminates refractory maintenance & reduces heater downtime

Soot Blowing Mechanism

- ▶ Keeps the tube surface clean
- ▶ Maintains uniform heat transfer

Cyclonic Combustion

- ▶ Unique technology that uses high-velocity tangential air jets for secondary air
- ▶ Optimises and balances excess air and ensures higher flue gas residence time in the chamber
- ▶ Improves turbulence in the furnace to ensure better combustion of volatiles
- ▶ Reduces losses due to incomplete combustion

Thermic Fluid Pre-Heater

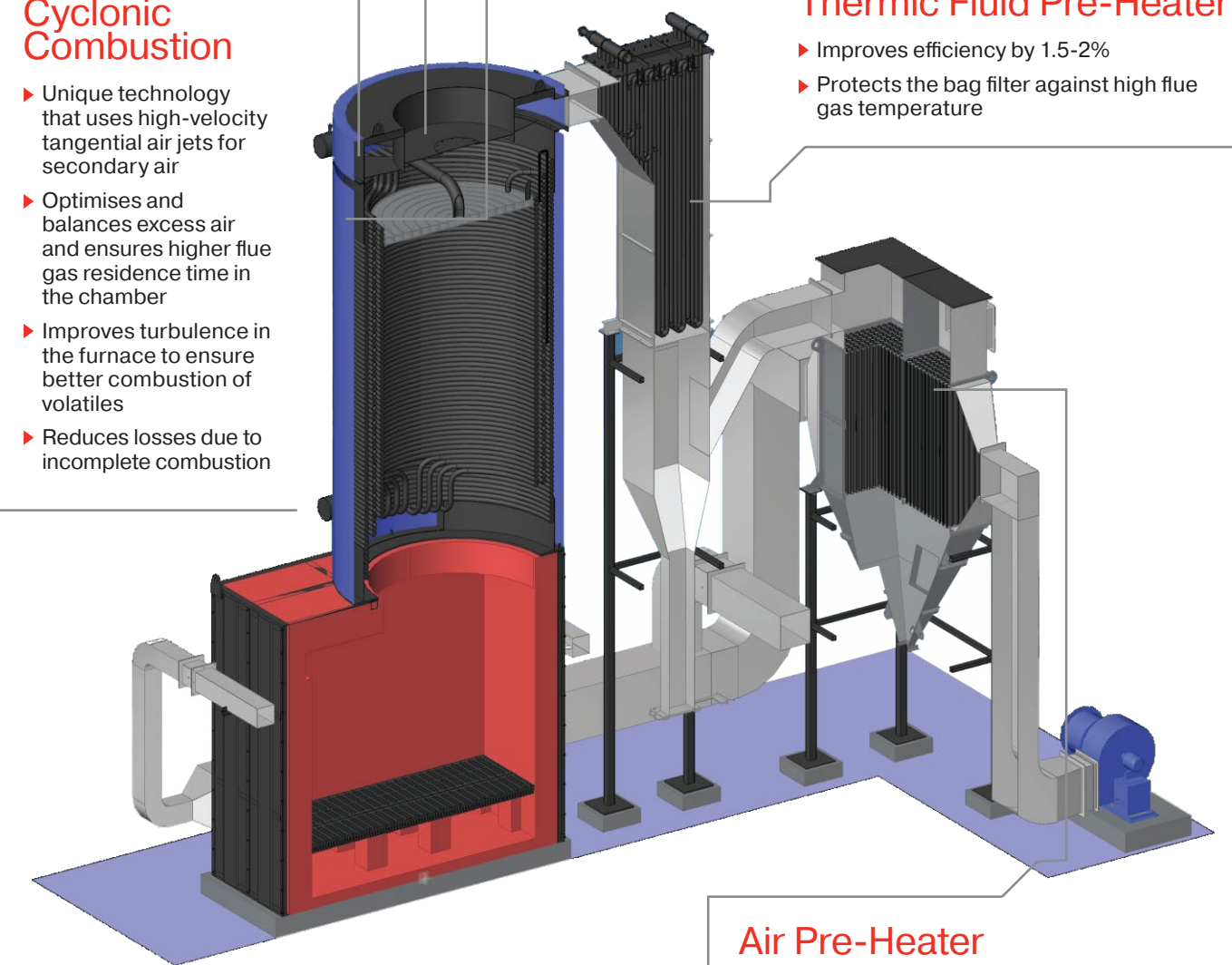
- ▶ Improves efficiency by 1.5-2%
- ▶ Protects the bag filter against high flue gas temperature

Air Pre-Heater

- ▶ Reduces clinkering & slagging in the furnace
- ▶ Reduces fouling in the APH

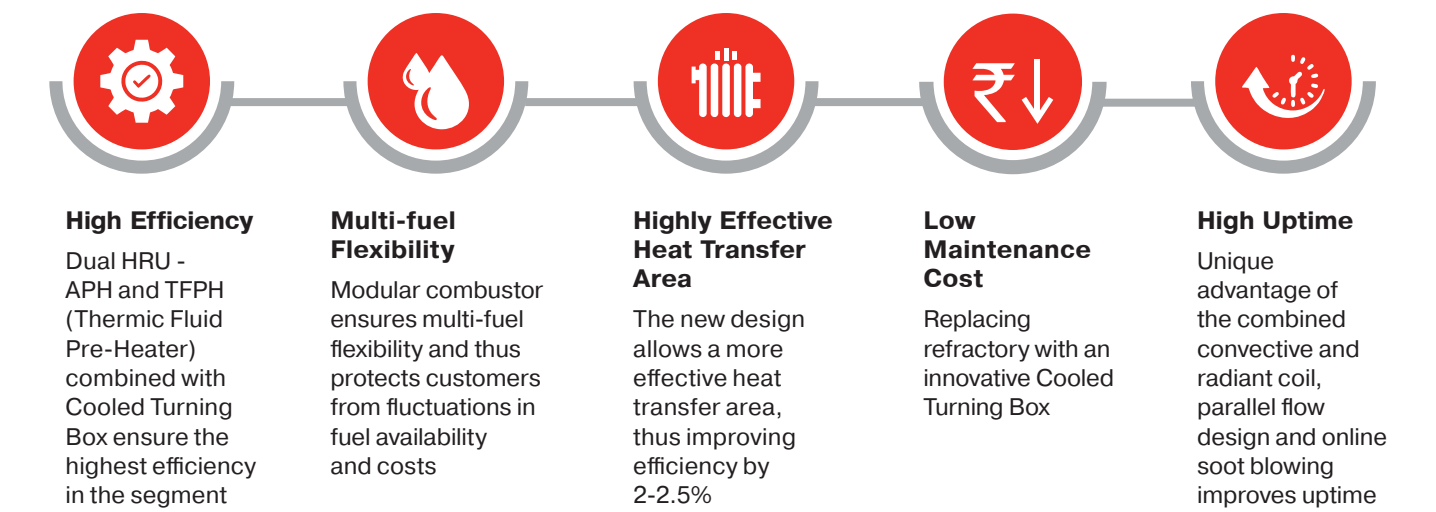
Combustors

- ▶ Rectangular furnace ensures hassle-free laying of refractory at the site and thus reduces the refractory maintenance cost. This allows for an overall reduction in refractory weight by 60% when compared to conventional two-coil heaters.
- ▶ This multi-fuel flexible combustor helps in addressing the challenge of inconsistent operations due to changes in fuel quality and availability.

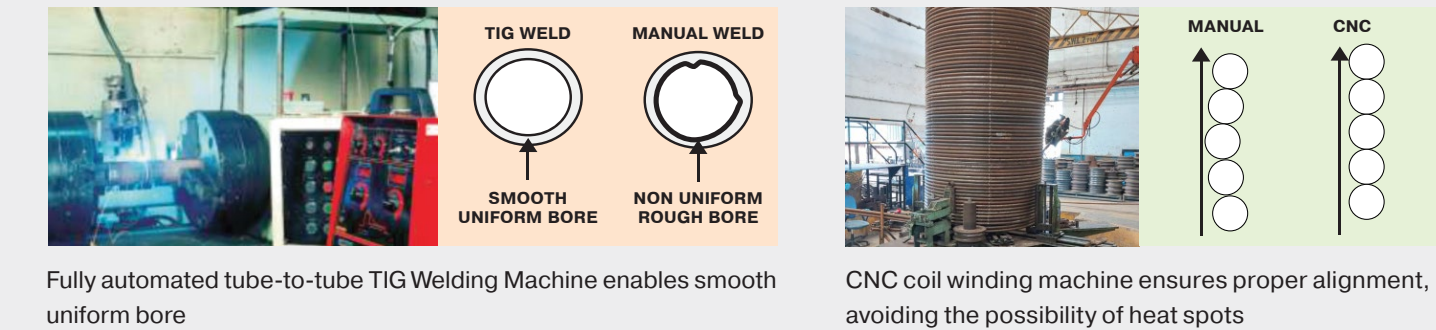


Customer benefits

Dynatherm has been designed and engineered for a host of benefits that make it most cost-effective & efficient thermic fluid heater in its class.



Manufacturing Excellence



Major Applications

